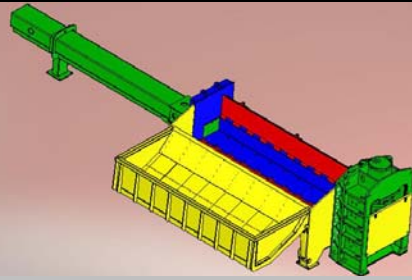




**SHEAR-BALER
EAGLE 750**



ENGINE

Type.....VEM/SEIPEE.
 Engine Power Pack3 X 90Kw.
 Max Power.....367 HP at 1500 RPM.
 Voltage.....400 V. 60 Hz.
 Operating Voltage.....24 Volt.

HYDRAULIC SYSTEM

Working System.
 2 X Parker Variable Displacement Axial Piston Pump.
 Max flow rate..... (270 cc/revolution).....103 gal/min.
 Max flow rate..... (270 cc/revolution).....103 gal/min.
 Max operating pressure.....5076 psi.

3 X Parker Vane Pump System
 Max flow rate.....(270 cc/revolution).....103 gal/min.
 Max flow rate.....(230 cc/revolution).....87 gal/min.
 Max flow rate.....(100 cc/revolution).....37 gal/min.
 Max operating pressure3626 psi.

3 X Parker Vane Pump System
 Max flow rate.....(270 cc/revolution).....103 gal/min.
 Max flow rate.....(160 cc/revolution).....60 gal/min.
 Max flow rate.....(100 cc/revolution).....37 gal/min.
 Max operating pressure3626 psi.

2 X Parker Vane Pump System for Off-Line
 Max flow rate.....(150 cc/revolution).....79 gal/min.
 Max flow rate.....(50 cc/revolution).....185 gal/min.
 Max operating pressure3626 psi.

Max Shear Pressure.....5076 psi.
 Max Blocking Sheet Pressure.....5076 psi.
 Max Lid and Door Pressure.....5076 psi.
 Distributing blocks with electrically operated logic valves.

DIMENSIONS

Overall length.....55'77"
 Overall width.....8'20"
 Overall height.....13'12"
 Weight of machine fully equipped approx..287,000 lbs.

MATERIAL USED

Container in abrasion resistant steel HARDOX 450.
 Shear structure Fe 510 D.
 Shear blades 45NiCrMoV 166.

PERFORMANCE

Cuts per min at 3 ft stroke length.....4
 Cuts per min at 2 ft stroke length.....7

Length of the material sheared.....**VARIABLE**
 with proximity control.

PRODUCTIVITY

- Sheared Material.....33,000/55,000 lb/Hour.

GENERAL DESCRIPTION

Max force Shear..... 826Ts.
 Max force Blocking Sheet.....187Ts.
 Max force Lid.....385Ts.
 Max force Door.....385Ts.
 Max force Pushing Piston.....187Ts.

STANDARD EQUIPMENT

- Automatic shearing cycle with precompression.
- Economizer cut cycle.
- Automatic baling cycle.
- Electrical control system with PLC.
- Centralized automatic shear greasing.
- 4 times reversible cutting blades.
- Cooling/cleaning hydraulic oil system.
- Control cabin.
- Preloader.
- Electric pump to drain waste fluids from the box.

OIL TANK CAPACITY

Hydraulic oil tank capacity.....1320 gal.
 Hydraulic oil circuit total capacity..... 1850 gal.

OPTIONAL EQUIPMENT

- Heating/Air Conditioning for cabin.
- Electric hydraulic oil pre-heater.
- Remote control centralized interface.
- Automatic baler greasing.
- Remote control.
- Air cooling for electric main board.
- Laser controlled material length/stroke.

The production output and density data are not technical characteristics of the equipment itself. These data are variable, depending on the quantity & quality of the loaded material and on the general working conditions. Therefore, such data should not be construed as a guaranty of performance level or density level.