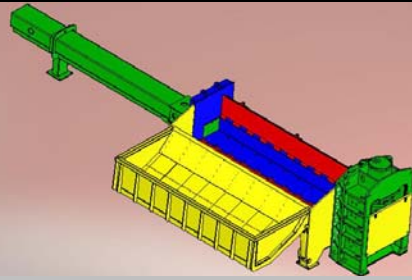




# SHEAR-BALER EAGLE 1250



### ENGINE

Type.....VEM/SEIPEE.  
 Engine power pack .....3 X 132Kw.  
 Max Power ..... 538 HP at 1500 RPM.  
 Voltage.....400 V. 50 Hz.  
 Operating Voltage.....24 Volt.

### HYDRAULIC SYSTEM

Working System.  
 3 X Parker variable displacement axial piston pump.  
 Max flow rate.... 1x270 cc/revolution...103 gal/min.  
 Max flow rate.... 1x270 cc/revolution...103 gal/min.  
 Max flow rate.... 1x270 cc/revolution...103 gal/min.  
 Max operating pressure.....5076 psi.

3 X Parker Vane Pump System  
 Max flow rate..... 230 cc/revolution...87 gal/min.  
 Max flow rate.....230 cc/revolution...87 gal/min.  
 Max flow rate.....230 cc/revolution...87 gal/min.  
 Max operating pressure.....3625 psi.

3 X Parker Vane Pump System..  
 Max flow rate.....160 cc/revolution...61 gal/min.  
 Max flow rate.....160 cc/revolution...61 gal/min.  
 Max flow rate.....160 cc/revolution...61 gal/min.  
 Max Operating Pressure .....3625 psi.

2 X Parker Vane Pump System for Off-Line  
 Max flow rate.....(200 cc/revolution).....79 gal/min.  
 Max flow rate.....(50 cc/revolution).....18 gal/min.  
 Max operating pressure.....3625 psi.

Max Shear Pressure.....5076 psi.  
 Max Blocking Sheet Pressure.....5076 psi.  
 Max Lid and Door Pressure.....5076 psi.  
 Distributing blocks with electrically operated logic valves.

### DIMENSIONS

Overall length..... 59"  
 Overall width..... 8', 20"  
 Overall height..... 13', 12"  
 Weight of machine fully equipped approx..353,000 lbs.

### MATERIAL USED

Container in abrasion resistant steel HARDOX 450.  
 Shear structure Fe 510 D.  
 Shear blades 45NiCrMoV 166.

### PERFORMANCE

Cuts per min at 3 ft stroke length.....8  
 Cuts per min at 2 ft stroke length.....12

Length of the material sheared.....**VARIABLE**  
 With Proximity Control.

### PRODUCTIVITY

- Sheared Material..66,100/110,200 lb/Hour.

### GENERAL DESCRIPTION

Max force Shear.....1378Ts.  
 Max force Blocking Sheet.....220Ts.  
 Max force Lid.....529Ts.  
 Max force Door.....529Ts.  
 Max force Pushing Piston.....220Ts.

### STANDARD EQUIPMENT

- Automatic shearing cycle with precompression.
- Economizer cut cycle.
- Automatic baling cycle.
- Electrical control system with PLC.
- Centralized automatic Shear greasing.
- 4 times reversible cutting blades.
- Cooling/cleaning hydraulic oil system.
- Control cabin.
- Preloader.
- Electric pump to drain waste fluids from the box.

### OIL TANK CAPACITY

Hydraulic oil tank capacity.....2245 gal.  
 Hydraulic oil circuit total capacity..... 2641 gal.

### OPTIONAL EQUIPMENT

- Heating/Air Conditioning for cabin.
- Electric hydraulic oil pre-heater.
- Remote control centralized interface.
- Automatic Baler greasing.
- Remote Control.
- Air cooling for electric main board.
- Laser controlled material length/stroke.

The production output and density data are not technical characteristics of the equipment itself. These data are variable, depending on the quantity & quality of the loaded material and on the general working conditions. Therefore, such data should not be construed as a guaranty of performance level or density level.