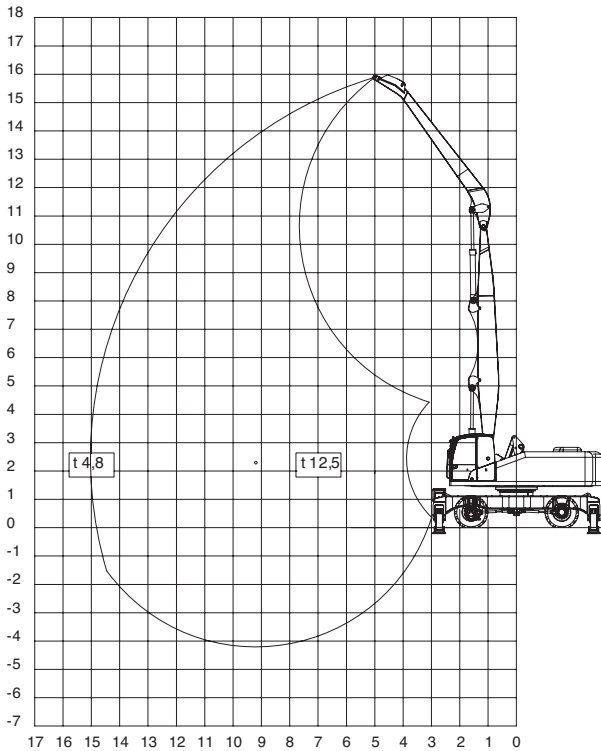


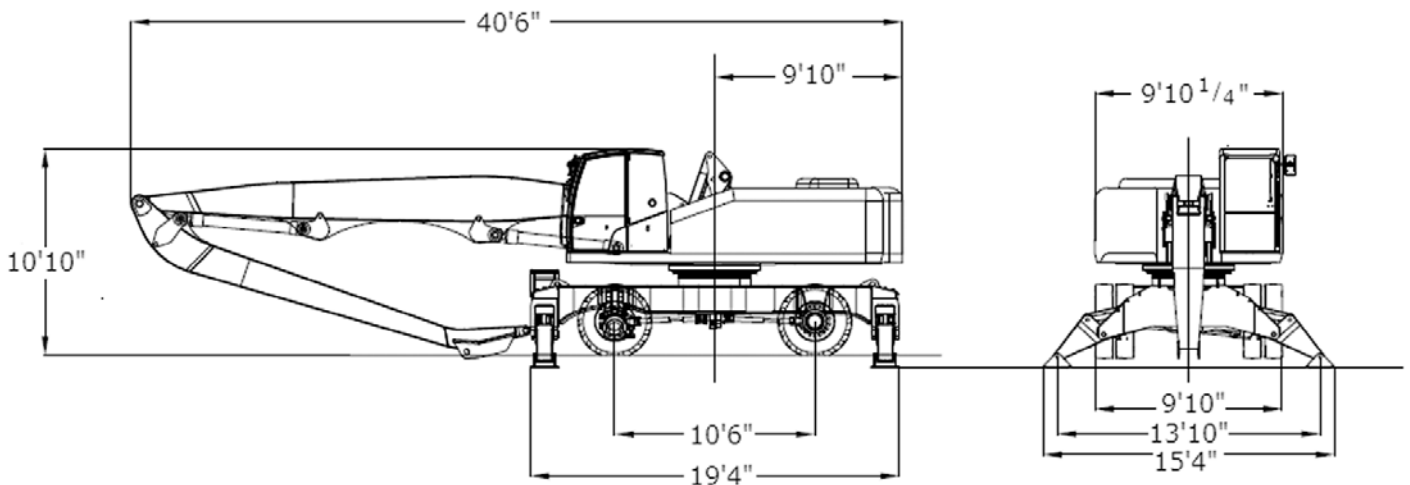
Lifting capacities



650 Height Feet	Lifting Capacity on 360° Machine on Wheels Operating Range (Feet)						
	17.4	19.7	26.2	32.8	39.3	45.9	49.2
45.9			16,468				
39.3			16,468	13,227			
32.8			13,139	10,780	9,700		
26.2			13,977	10,449	7,407		
19.6		18,981	14,352	9,832	7,076		
13.1		19,995	12,985	9,060	6,613	4,850	
6.5	20,436	17,306	11,596	8,267	6,150	4,585	3,968
0		15,586	10,538	7,605	5,732	4,365	
-6.5		14,837	9,898	7,165	5,467	4,254	

650 Height Feet	Lifting Capacity on 360° Stabilized Machine Operating Range (Feet)						
	17.4	19.7	26.2	32.8	39.3	45.9	49.2
45.9			16,468				
39.3			15,917	15,278			
32.8			13,139	12,852	13,293		
26.2			13,977	13,293	11,552		
19.6		18,981	15,586	14,241	12,015		
13.1		23,391	17,769	14,241	11,993	9,281	
6.5	32,385	27,778	19,995	15,961	11,552	9,038	8,068
0		30,467	21,274	15,322	11,177	8,840	
-6.5		30,930	20,679	14,903	10,934	8,752	

The lifting capacities with rotation 360° are expressed in lb (and daN) without a safety factor.



Technical characteristics**ENGINE**

Type.....4-stroke diesel, direct injection,
turbo-charged and after-cooled
Number of cylinders..... 6
Max power.....265 HP (195 kW) @ 2200 RPM
Displacement.....436 cu/in
Cooling..... liquid
Air filter..... dry
Sound insulated engine compartment.
Engine assembled on vibration dampers.

ELECTRIC SYSTEM

Operating voltage..... 24 V
Alternator..... 80 A / 24 V
Batteries 2 x 110 Ah / 12 V

HYDRAULIC SYSTEM

LSR Hydraulic System consisting of:
N°1 variable cylinder axial position.
Constant power control
N°1 axial piston pump for turret rotation.
Max Rated Flow140 + 40 gal./min
N°1 gear pump for auxiliary services and power steering.
Max Working Pressure4,700 psi
Ergonomic control devices with integrated auxiliary function buttons.

Cylinders

Lifting: n°2 cylinders59" x 512"
Arm: n°2 cylinders55" x 484"
Circuit with multi-spiral hoses, very high pressure stainless steel pipes, ORFS face seal fittings, stainless steel safety valves.

Hydraulic oil cooling by air-oil heat exchanger combined with diesel engine radiator.

TURRET ROTATION

Rotation by means of axial piston hydraulic motor coupled to two-stage epicyclic reduction gear with pinion operating on internally toothed slewing ring.
Braking valve assembly integral with hydraulic motor.

Slew ring with double row of bearings590"
Rotation Speed.....0-8 RPM

TRANSMISSION

4-wheel drive with hydrostatic transmission, with self-adjusting, variable displacement axial piston hydraulic motor.
2-speed gear box selectable from the cab
Axles with epicyclic reduction gear on the hubs.
Swinging front axle with hydraulic lock
Ground Speed in 1st Gear3 MPH
Ground Speed in 2nd Gear12 MPH

BRAKES

Pedal-operated hydraulic service and emergency brake,
Cab control parking brake operating on transmission.

TIRES

Twinned front and back wheels with super elastic solid beads
Size.....12.00-24

STEERING

Controlled from the cab with gear pump driven power steering.

DRIVE CAB

All round visibility, hydraulic elevation, sound insulated cab with front window retractable into roof.

Adjustable seat with servo control integrated into armrest.

Digital dashboard completed with following indicators: engine oil pressure, engine water temperature, fuel level, tachometer, revolution counter, hours counter and clock, Alarm and regular working indicators.

Push button panel for cab elevation, speed selection, parking brake, lights, fan, windshield wiper, window washer, radio AM/FM

FUEL AND OIL CAPACITIES

Fuel Take Capacity120 gal.
Hydraulic Oil105 gal.

WEIGHTS (APPROXIMATE)

Weight90,000 lbs.